

Quick Print

Quick Print 1.0

User guide

Product names mentioned in this manual are the trademarks of their respective companies.

Copyright © 2013 Hyperbolic Software. www.hyperbolicsoftware.com

Table of Contents

<i>Introduction</i>	3
How to use Quick Print	4
<i>How to print the Clipboard</i>	5
Interface details	5
<i>Common controls</i>	5
<i>Images controls</i>	6
<i>Application controls</i>	7
<i>Folder controls</i>	7
<i>Text and font controls</i>	7
<i>PDF controls</i>	8
<i>Web browser file controls</i>	9
Known bugs	9

QUICK PRINT



Introduction

Quick Print is a handy program that allows you to print in an easy and quick way.

It prints the Finder's items without opening the native application and prints the Clipboard.

Currently it supports most of the common images, text files, web browser files, PDFs, fonts, content of folders, applications and many more. When a non supported file kind is chosen, it shows the Quick Look preview image that can also be printed.

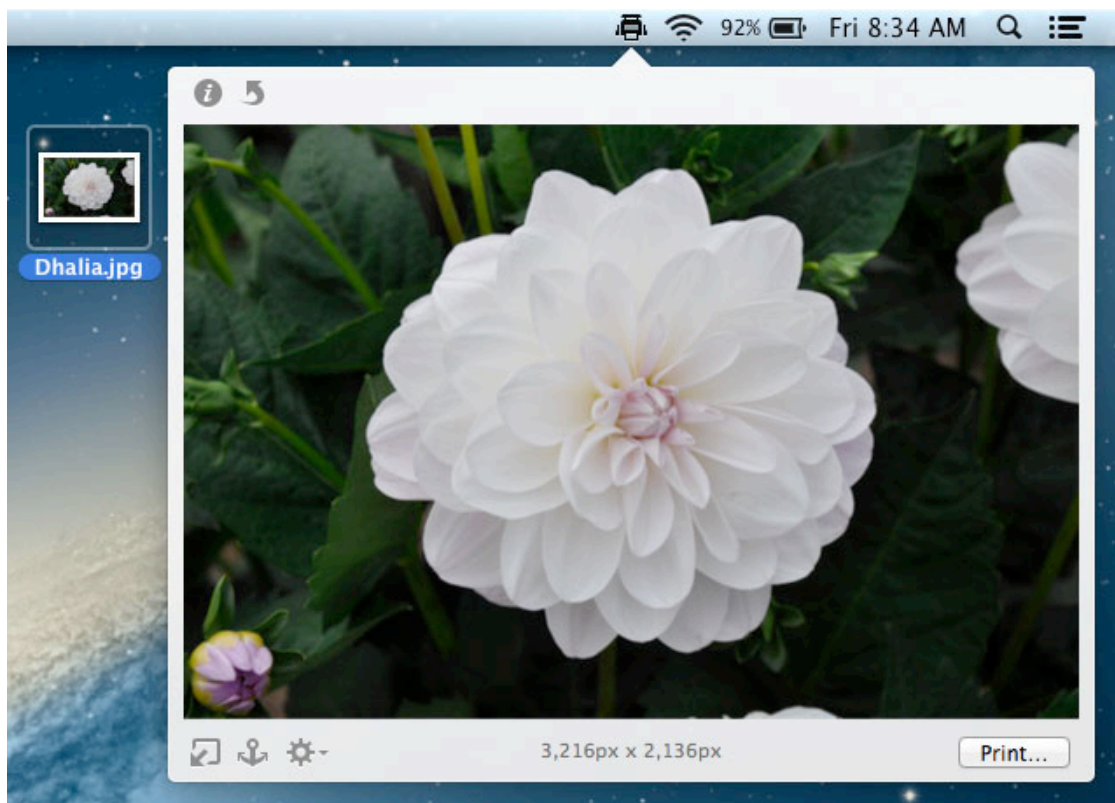


Figure 1: Quick Print window.

How to use Quick Print

To print an item you only need to drag it from the Finder; if the Quick Print window is closed, click or drag an item on its icon on the menu bar, then click on the print button. Note that due to the inhibitions of Sandbox, you need to drag, as the first item of each restart, the disk that contains the item to print.

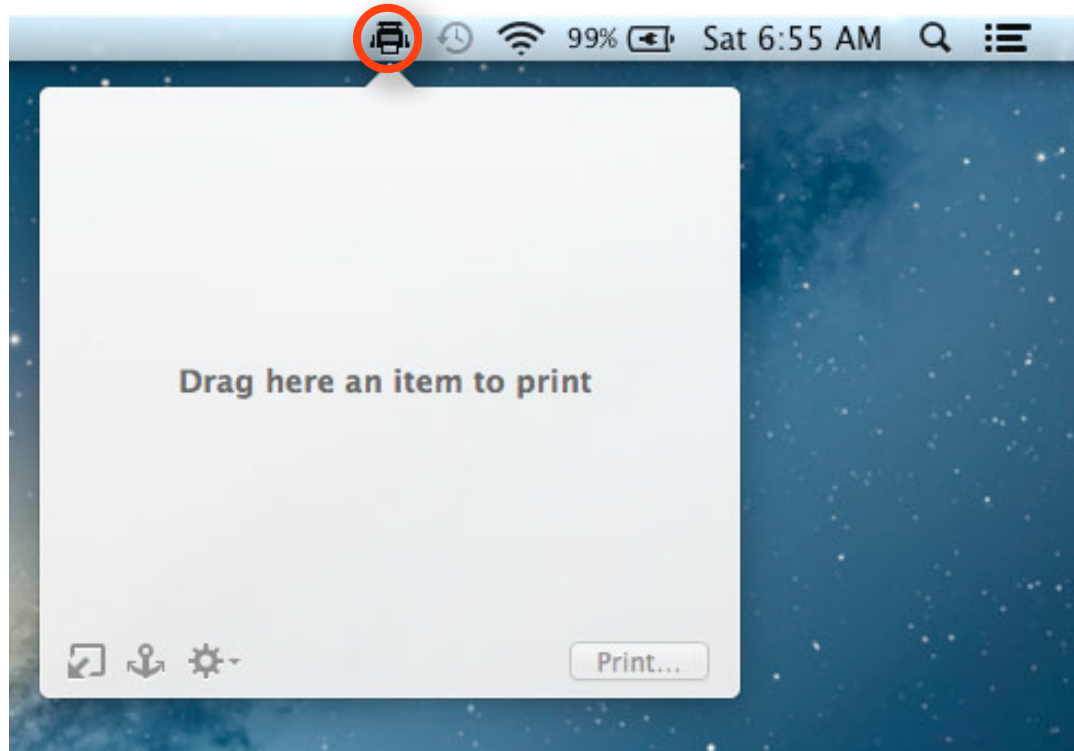


Figure 2: Attached Quick Print window with no item to print chosen.

To open the window you have to click on the Quick Print icon (red circle in figure 2) on the menu bar, or type the hot key (^ ⌘ P by default); you can also use the system Service (see figure 3) available from the Finder and from all the applications whose selected information can be used by Quick Print.

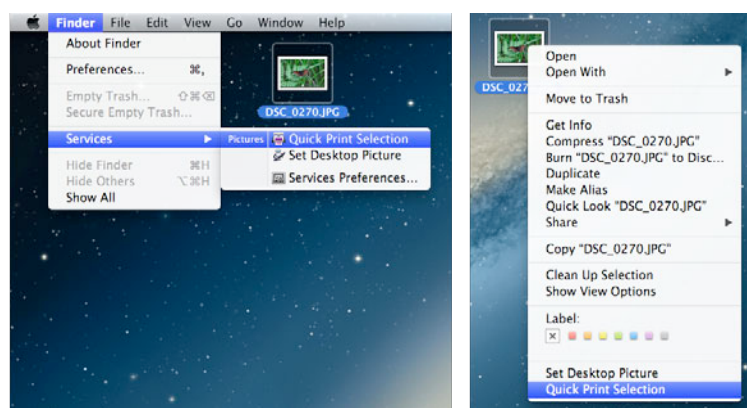


Figure 3: System Service to open Quick Print.

How to print the Clipboard

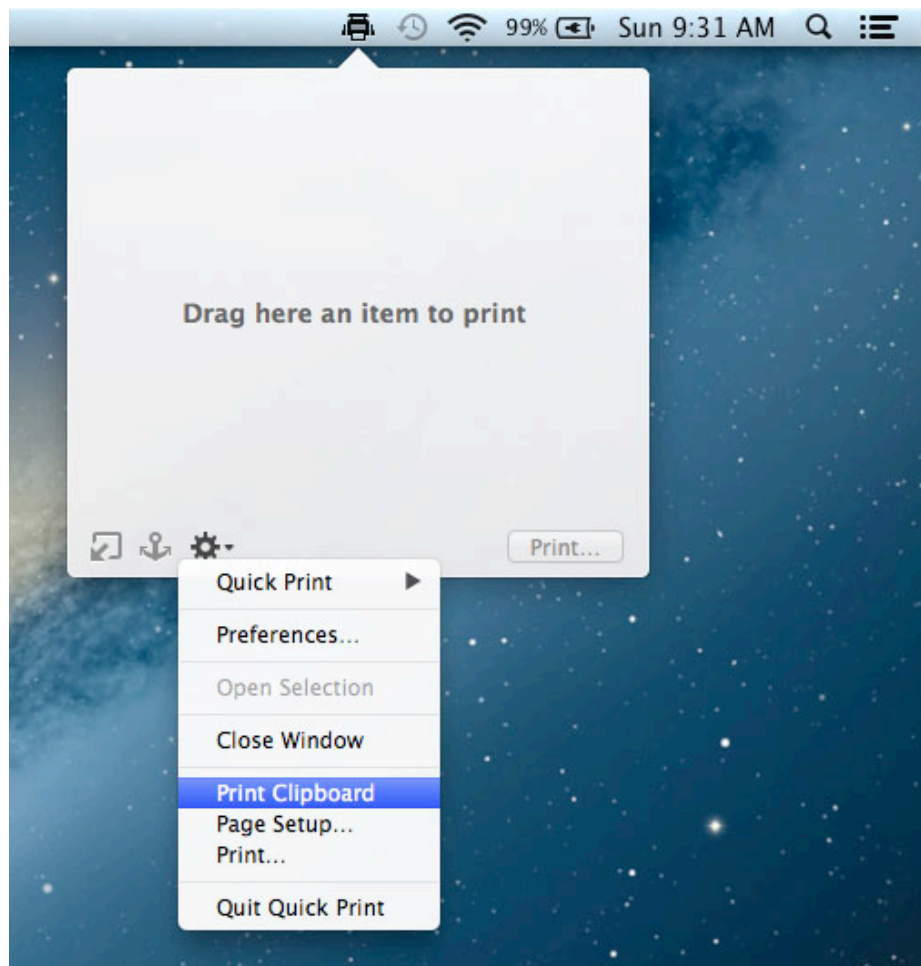


Figure 4: Actions menu.

To print the data copied to the clipboard, just choose the Print Clipboard menu item from the Actions menu.

Interface details

Common controls

Common controls are application-dependent and are visible at all time.



Detach button, allows you to detach the window from the menu bar.
Note that it's possible to detach the window by clicking on the window background.



Attach button, it is visible once the window is detached and allows you to re-attach the window.



Anchor button, it's visible only when needed and, when selected, allows you to keep the window open when a click on the desktop is made and no selected file was found.



Actions menu, allows you to accomplish the main actions related to the application, such as opening the preferences window, quitting Quick Print, etc.



Info button, it is visible only when an item to print is showed and allows you to see and print the main attributes of that item.

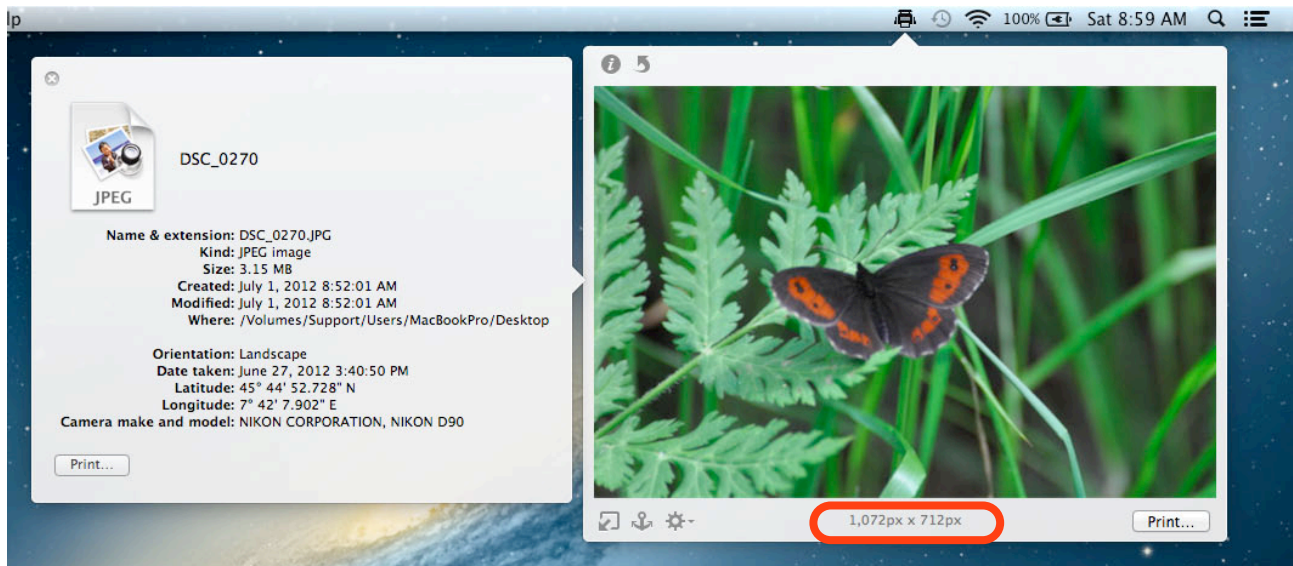


Figure 5: Image to print with the info window that shows the attributes to be printed.

Images controls



Rotate left button, allows you to rotate the image to the left.

If you hold down the option key, it allows you to rotate the image to the right.

Clicking on the dimension field (red circled in the image above), it's possible to change the size units.

If you double-click on the image, the standard "Image Edit" panel will be shown, allowing you to apply image filters before printing it.

Folder controls

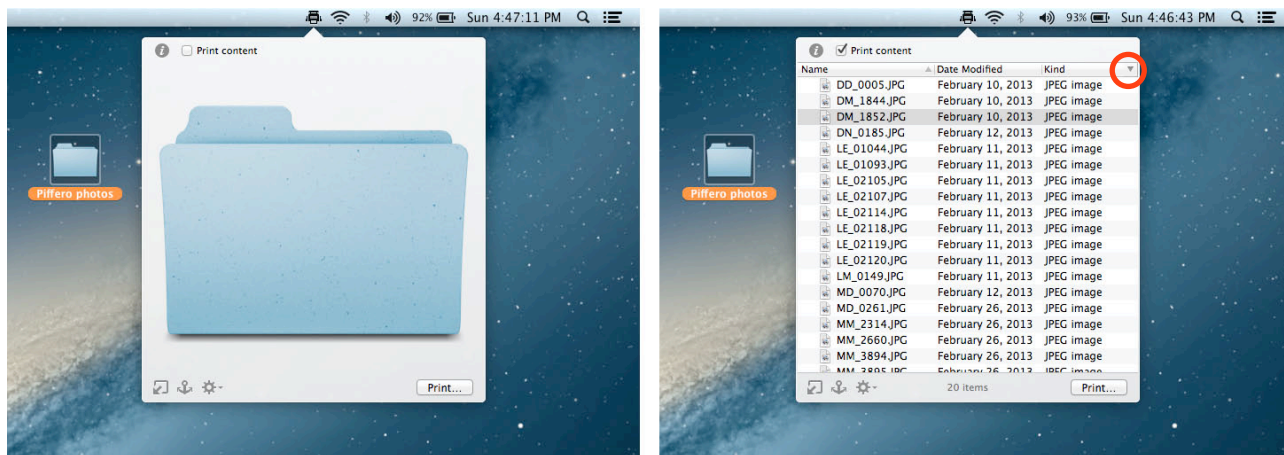


Figure 6: Folder icon and its content.

If a folder, a smart folder or a hard drive is chosen, Quick Print gives you two possibilities: you can either print the icon or the folder(or hard drive)'s content as a list. The content is visible only if the "Print content" check button is ticked. You can customize the list's view by clicking on the menu represented by a down-oriented triangle at the right side of the list, red circled in the figure 7.

Text and font controls

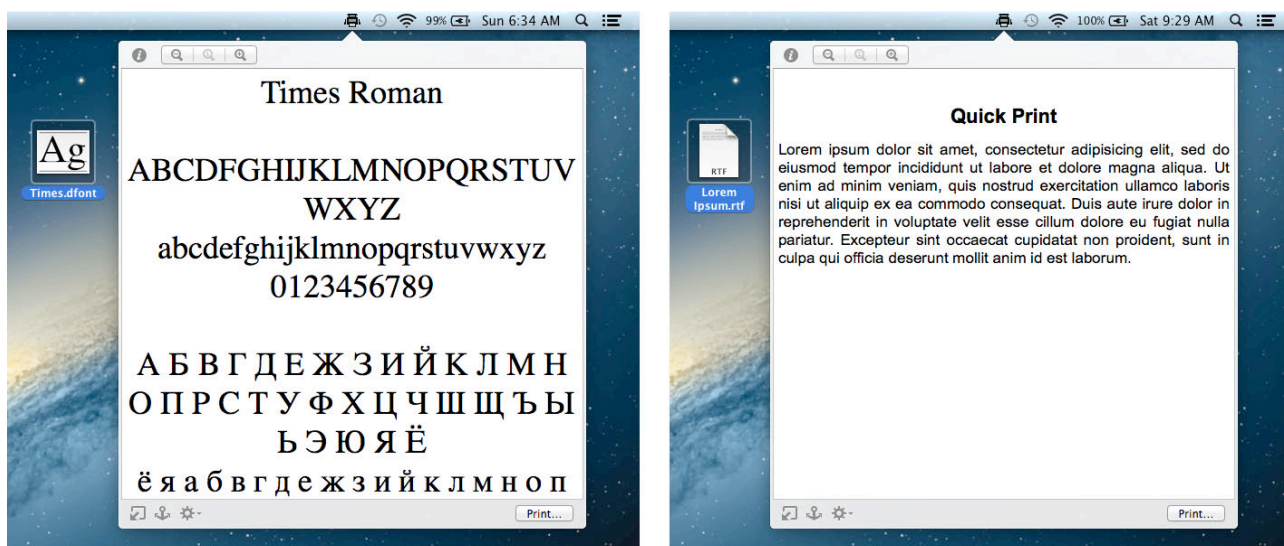


Figure 7: Font and text file to be printed.



Scale the font size down.



Scale the font size up.



Display the document in the initial size.

Using the above buttons allows you to print the document in the size you have set.

PDF controls

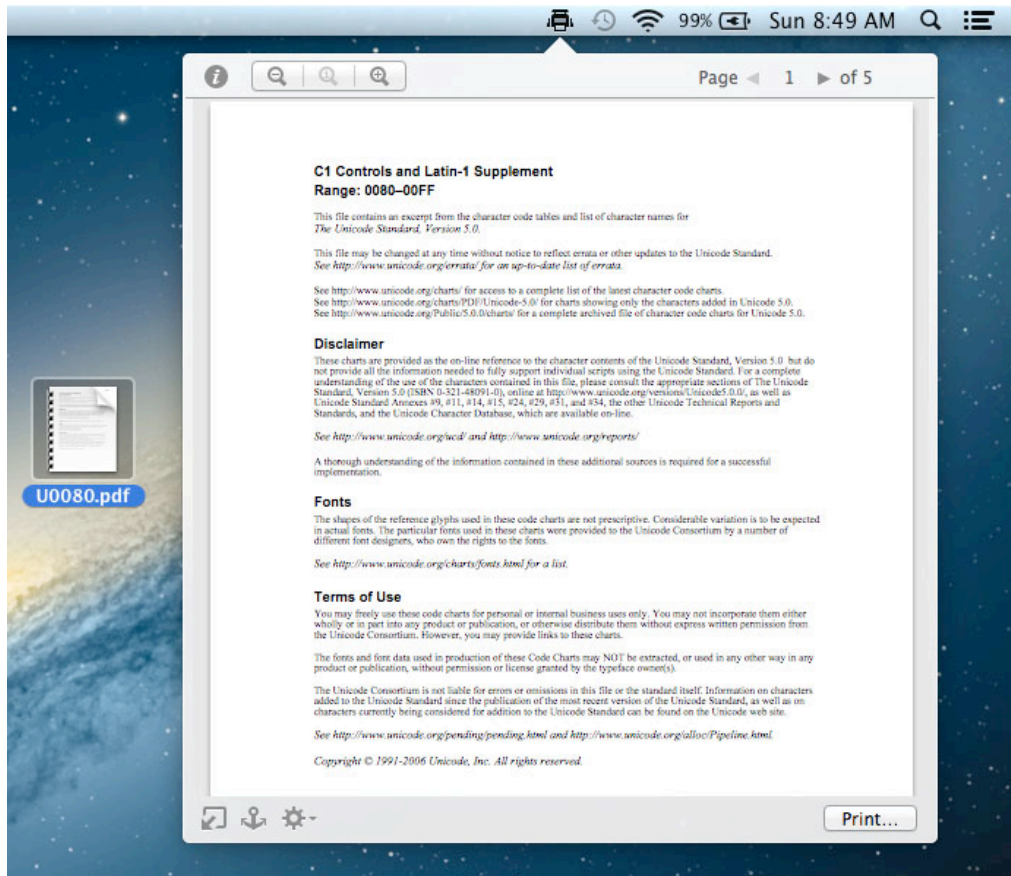


Figure 8: PDF file to be printed.

As the text view, the PDF view has the zoom document controls. In addition, it shows the navigation controls, which allow you to jump to a specific page number or browse the pages by clicking on the arrow buttons.

Web browser file controls



Figure 9: Web browser file to be printed.

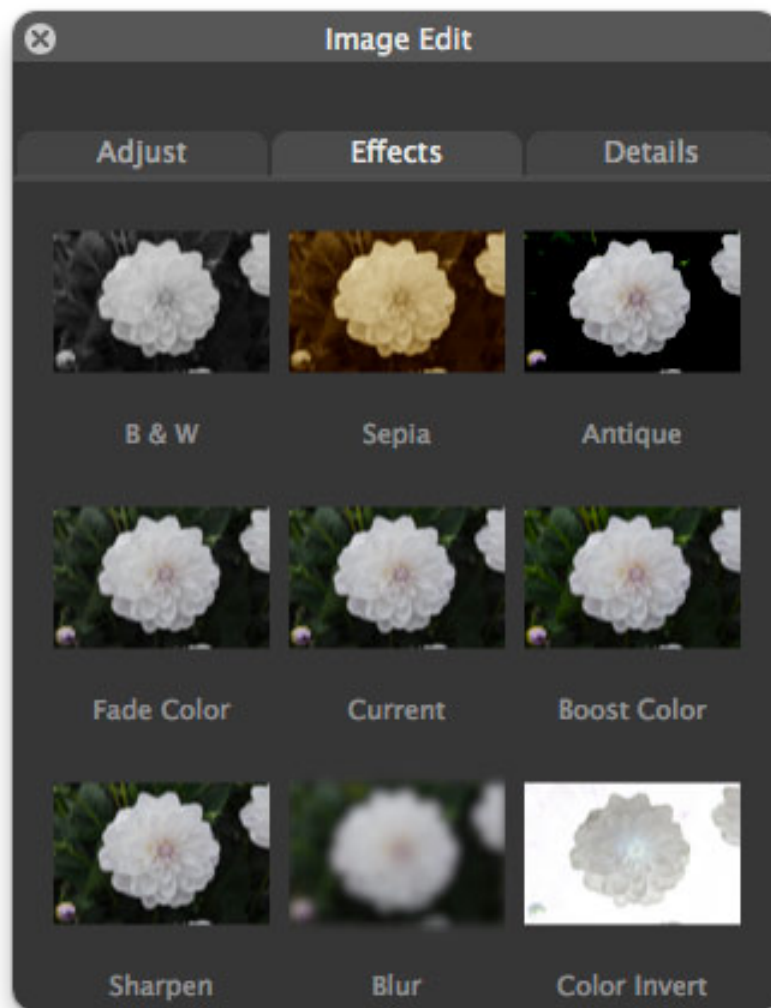
Contains the navigation buttons, and the stop button.

Known bugs

1- When one of the effects in the figure below is applied to an image, and then another image is chosen, the Image Edit Panel doesn't reset the filter and it is added to the new image, even if it is not visible in the Quick Print window. However, when you try to print the new chosen image, the previous effect will be applied to it.

Workaround:

To eliminate the filter you need to open the Image Edit Panel again and click on the "Current" filter. This way, you'll be able to print the image in the original format.



Quick Print user guide, version 1.0, last update June 2013.

Quick Print is Copyright © 2013 of Hyperbolic Software.